



Look Book

cabi

fall 2016

A full-page photograph of two women walking across a busy city street, likely in Japan, as evidenced by the Japanese billboards and signage in the background. The woman on the left is wearing a grey vest over a white long-sleeved shirt and patterned leggings, carrying a brown clutch bag. The woman on the right is wearing a black and white striped turtleneck sweater and black leggings. Both are smiling and looking towards the camera. The background is filled with various Japanese advertisements, including one for 'Silent Siren' and another for 'Euphoria'. The street is crowded with other pedestrians, and the overall atmosphere is vibrant and urban.

Women wake up with a lot on their minds, but all of us face the same tough question: “What am I going to wear?” Between finding the time to go shopping and having an eye for putting it together, the answer can feel out of reach. As your cabi Stylist, I’m here to help you face that question (and your closet!) with a sense of fun and inspiration each morning. Cabi keeps me up to date on all the latest trends, so we can build a wardrobe that’s ready for everything your dynamic life has to offer. Together, we’ll discover a unique look that is truly your own. So say goodbye to the stress of shopping at the mall—sit back, relax, and enjoy the Fashion Experience!

your cabi stylist



the look of fall

We were somewhere under Tokyo’s skyscrapers, marveling at the fashion-forward street style, rich colors, and bright lights when it hit us: this fall is truly unique. Japan’s cultural capital provided the ideal backdrop for all our favorite trends, like rich shades of red blended together, and chic loungewear that’s ready to face the world. We paired windowpane ponte and adorable A-line skirts back to fitted turtlenecks—our nod to mod. We’re finding new ways to embrace the city boho trend that lends a ’60s feel to cosmopolitan style and bringing a feminine touch to menswear-inspired looks. We encourage you to reach for something surprising and unexpected this season, and we’re excited to share our style and ideas with you. This fall, embrace something elegantly different.



Kat

KAT WOODSIDE, CHIEF DESIGN OFFICER

the fall 2016 collection

elegantly DIFFERENT

- sakura red 4
- tea lounge 8
- kyoto blossom 12
- calligraphy brush 16
- pacific blue 20
- osaka nights 24
- bamboo forest 28
- glossary 32
- The Heart of cabi Foundation 42



sakura red



A printed belt is our go-to for pattern mixing made easy.

#3155 Cobblestone Cardigan XS-XL
USA 98 | CAN 128 | UK 76

#3271 Venus Top XS-XL
USA 79 | CAN 99 | UK 62

#3299 Zebra Belt XS-XL
USA 59 | CAN 69 | UK 46

#3201 Ava Trouser (rhubarb) 0-16
USA 109 | CAN 129 | UK 84
also available in black

#2073 Pyramid Charm Earrings (as studs)
USA 49 | CAN 59 | UK 38

Love,
Carol
collection

#3162 Rosewood Sweater XXS-XL
USA 149 | CAN 189 | UK 119

#3251 Flanders Top XS-XL
USA 79 | CAN 99 | UK 62

#3189 New Crop 0-16
USA 109 | CAN 139 | UK 84

#2073 Pyramid Charm Earrings
USA 49 | CAN 59 | UK 38

#2072 Pyramid Necklace
USA 58 | CAN 68 | UK 44

#3158 Camo Pullover XS-XL
USA 109 | CAN 139 | UK 84

#5067 V-Neck Cami (fiery) XS-XL
USA 36 | CAN 46 | UK 28
also available in cement

#3298 Here or There Belt XS-XL
USA 89 | CAN 109 | UK 69

#3219 Fiery Skirt 0-16
USA 89 | CAN 109 | UK 69

#2073 Pyramid Charm Earrings (as studs)
USA 49 | CAN 59 | UK 38

#2090 Zelda Necklace
USA 68 | CAN 88 | UK 52

#2089 Zelda Cuff
USA 59 | CAN 69 | UK 46

#3175 Outing Blazer 0-16
USA 159 | CAN 199 | UK 124

#3258 Cameo Top XS-XL
USA 84 | CAN 104 | UK 66

#3299 Zebra Belt XS-XL
USA 59 | CAN 69 | UK 46

#3193 Dusk Destructed Skinny 0-16
USA 119 | CAN 139 | UK 94
curvy fit #3194

#2070 Rock Star Earrings
USA 49 | CAN 59 | UK 38





#2091 Cameo Earrings



Add the Cameo Necklace for a sophisticated date night look.

#3180 Harbor Jacket
#3270 Heartbreaker Top XS-XL
USA 89 | CAN 109 | UK 69 ♥
#3191 Slim Boyfriend
#2092 Cameo Necklace



heart of cabi item



Add a messy roll to show off your favorite fall boots.



Topshop slingbacks



Wear your jacket as a cape for a nonchalant uptown look.

#3174 Ava Jacket
#3244 Cute Tee XS-XL
USA 74 | CAN 94 | UK 58
#3299 Zebra Belt
#3203 Windowpane Trouser



#3244 Cute Tee



Nail the nod to mod trend with chunky patent leather slingbacks.

sakura red



#2092 Cameo Necklace



Prep school informal: sweaters over the shoulders are casual and elegant.

#3155 Cobblestone Cardigan
#3258 Cameo Top
#3219 Fiery Skirt

tea lounge

#3167 Fergie Turtleneck XXS-XL

USA 139 | CAN 179 | UK 108

#3081 Simple Cami (black) XS-XL

USA 36 | CAN 46 | UK 28

also available in nude and white

#3210 Spacedye M'Leggings XS-XL

USA 79 | CAN 98 | UK 62

#2089 Zelda Cuff

USA 59 | CAN 69 | UK 46

Love,
Carol
collection



#3184 Mesh-Back Jacket XXS-XL

USA 189 | CAN 239 | UK 149

#3243 Beyond Tee XS-XL

USA 99 | CAN 119 | UK 78

#3212 Safari Legging XS-XL

USA 99 | CAN 119 | UK 78

#2076 Chelsea Charm Necklace

USA 68 | CAN 88 | UK 52

Throw on a flowy, modern
tunic for a quick change
from casual to dressy.



Love,
Carol
collection

#3165 Napa Vest XXS-XL

USA 139 | CAN 179 | UK 108

#3229 Relax Tee XXS-XL

USA 84 | CAN 104 | UK 66

#3204 Trek Jogger XS-XL

USA 99 | CAN 119 | UK 78

**#2073 Pyramid Charm
Earrings (as studs)**

USA 49 | CAN 59 | UK 38

#2076 Chelsea Charm Necklace

USA 68 | CAN 88 | UK 52



#3231 Recess Topper XS-XL

USA 99 | CAN 119 | UK 78

#3240 Recess Tank XS-XL

USA 64 | CAN 84 | UK 49

**#3211 Sleek Legging
(black)** XS-XL

USA 99 | CAN 119 | UK 78

also available in heather gray

Elevate your everyday ensemble
with statement tennies.





#3159 Sweater Pea Coat
#3243 Beyond Tee
#3195 Lace Skinny
curvy fit #3196
#2070 Rock Star Earrings



Tie the **Beyond Tee**
around your waist
for an effortless
slimming effect.

the beyond tee

Go beyond your tee
shirt expectations!



For a dressier look, tie
the **Beyond Tee** to the
side and pair with a
sleek pencil skirt.

#3243 Beyond Tee
#3220 Sigourney Skirt



Wear the **Beyond Tee**
long for a chic, fashion-
forward look.

#3173 Windowpane Jacket
#3243 Beyond Tee
#3203 Windowpane Trouser
#2072 Pyramid Necklace

Add a cozy knit
sweater to elevate an
otherwise casual style.



Prada knee-high boots

Switch out booties
for a sleek pair of
knee-high boots when
the weather gets chilly.



tea lounge



#2073 Pyramid Charm
Earrings (as studs)

#3162 Rosewood Sweater
#3229 Relax Tee
#3191 Slim Boyfriend

#3165 Napa Vest
#3225 Odyssey
Turtleneck XS-XL
USA 64 | CAN 84 | UK 49
#3218 Utility Skirt

#2072
Pyramid
Necklace



Patterned or sleek
opaque-tights are a
must for fall layering!

kyoto blossom

#3163 Reversible Wrap

Sweater XS/S; M/L

USA 129 | CAN 159 | UK 99

#3275 Medallion Reign Blouse

XS-XL

USA 89 | CAN 109 | UK 69

#3191 Slim Boyfriend

00-16

USA 109 | CAN 139 | UK 84



#3170 Penny Blazer

XS-XL

USA 149 | CAN 189 | UK 119

#3250 Daisy Blouse

XS-XL

USA 99 | CAN 119 | UK 78

#3193 Dusk Destructed Skinny

0-16

USA 119 | CAN 139 | UK 94

curvy fit #3194

#2091 Cameo Earrings

USA 59 | CAN 69 | UK 46

#2092 Cameo Necklace

USA 98 | CAN 118 | UK 76

Pair a structured blazer with feminine florals for a touch of boy-meets-girl.



Add a fur-trimmed scarf to a long statement sweater for chic, city boho style.

#3300 Duchess Scarf

USA 89 | CAN 109 | UK 69

#3166 Lara Sweater

XXS-XL

USA 159 | CAN 199 | UK 124

#3295 Provincial Dress

XXS-XL

USA 119 | CAN 149 | UK 94

#3168 Cable Cowl

XS-XL

USA 119 | CAN 149 | UK 94

#3228 Ernest Tee

XS-XL

USA 89 | CAN 109 | UK 69

#3199 The Scout

00-16

USA 119 | CAN 149 | UK 94

#2073 Pyramid Charm

Earrings (as studs)

USA 49 | CAN 59 | UK 38

#2076 Chelsea Charm Necklace

USA 68 | CAN 88 | UK 52


Layer a sweater over stripes for a cute pop of pattern.





#2076 Chelsea Charm Necklace



 Wear your dress like a tunic over your favorite skinnies.

- #3295 Provincial Dress
- #3298 Here or There Belt
- #3193 Dusk Destroyed Skinny curvy fit #3194
- #2090 Zelda Necklace
- #2089 Zelda Cuff



#3170 Penny Blazer



Dress up a simple ensemble with a statement scarf.

- #3300 Duchess Scarf
- #3228 Ernest Tee
- #3197 Skinny Cord
- #2091 Cameo Earrings

#2073 Pyramid Charm Earrings



- #3227 Quinn Tee XS-XL
USA 84 | CAN 104 | UK 66
- #3195 Lace Skinny curvy fit #3196
- #2073 Pyramid Charm Earrings
- #2076 Chelsea Charm Necklace



Pump it up! Add pin-up pumps to a basic tee for a next-level casual look.

Kyoto Blossom



Love,
Carol
collection



#3165 Napa Vest



Tie the Waterfront Shirt for a put-together twist, or leave it untied for a low-key look.

- #3163 Reversible Wrap Sweater
- #3290 Waterfront Shirt
- #3199 The Scout
- #2073 Pyramid Charm Earrings (as studs)

calligraphy brush

#3300 Duchess Scarf

USA 89 | CAN 109 | UK 69

#3161 Shirttail Cardigan XS-XL

USA 119 | CAN 149 | UK 94

#3278 Monaco Cami XS-XL

USA 96 | CAN 116 | UK 74

#3211 Sleek Legging (black) XS-XL

USA 99 | CAN 119 | UK 78

also available in heather gray

#2073 Pyramid Charm Earrings (as studs)

USA 49 | CAN 59 | UK 38

#3174 Ava Jacket XS-XL

USA 149 | CAN 189 | UK 119

#3273 Underline Blouse XS-XL

USA 79 | CAN 99 | UK 62

#3081 Simple Cami

(nude) XS-XL

USA 36 | CAN 46 | UK 28

also available in black and white

#3218 Utility Skirt 0-16

USA 89 | CAN 109 | UK 69

#2092 Cameo Necklace

USA 98 | CAN 118 | UK 76



Dress up your leggings with a chic structured vest.

#3178 Drafting Vest XS-XL

USA 149 | CAN 189 | UK 119

#3291 It's a Wrap Shirt XS-XL

USA 98 | CAN 128 | UK 76

#3212 Safari Legging XS-XL

USA 99 | CAN 119 | UK 78

#2090 Zelda Necklace

USA 68 | CAN 88 | UK 52

#2089 Zelda Cuff (x2)

USA 59 | CAN 69 | UK 46

#3249 Paris Blouse XS-XL

USA 94 | CAN 114 | UK 72

#3081 Simple Cami

(nude) XS-XL

USA 36 | CAN 46 | UK 28

also available in black and white

#3299 Zebra Belt XS-XL

USA 59 | CAN 69 | UK 46

#3189 New Crop 0-16

USA 109 | CAN 139 | UK 84

#2091 Cameo Earrings

USA 59 | CAN 69 | UK 46

Give your cropped jeans an uber-feminine edge with pin-up pumps.





#3278
Monaco
Cami



*Wear your cardigan as
a jacket for a chic suit
change-up.*

#3161 Shirttail Cardigan
#3259 Wraparound Top O-16
USA 99 | CAN 119 | UK 78
#3202 Top-Notch Trouser
#2070 Rock Star Earrings



#3259
Wraparound
Top



*Tuck in your tunic for a
super cute camisole vibe.*

#3160 Ballet Sweater
#3278 Monaco Cami
#3218 Utility Skirt
#2091 Cameo Earrings
#2092 Cameo Necklace



#3174 Ava Jacket



*Match a striped top with
striped accessories for
the perfect lineup.*

#3161 Shirttail Cardigan
#3273 Underline Blouse
#3081 Simple Cami (nude)
#3189 New Crop
#2070 Rock Star Earrings
#2090 Zelda Necklace
#2089 Zelda Cuff



*Belt your white
shirt at the waist
for a feminine
cinched look.*

#3291 It's a Wrap Shirt
#3197 Skinny Cord
#2091 Cameo Earrings



#2090 Zelda
Necklace



Tabitha Simmons
snake-print heels

calligraphy brush

pacific blue



Tartan plaid is so subtle it can print mix with almost any top.



#3181 Tartan Jacket 0-16
USA 169 | CAN 209 | UK 129

#3268 Poppy Top XS-XL
USA 84 | CAN 104 | UK 66

#3189 New Crop 0-16
USA 109 | CAN 139 | UK 84

#2070 Rock Star Earrings
USA 49 | CAN 59 | UK 38

#3180 Harbor Jacket XS-XL
USA 189 | CAN 239 | UK 149

#3274 Foulard Top XS-XL
USA 89 | CAN 109 | UK 69

#3220 Sigourney Skirt 0-16
USA 89 | CAN 109 | UK 69

#2076 Chelsea Charm Necklace
USA 68 | CAN 88 | UK 52



#3169 Darby Cardigan XS-XL
USA 89 | CAN 109 | UK 69

#3272 Cleo Top XS-XL
USA 84 | CAN 104 | UK 66

#3299 Zebra Belt XS-XL
USA 59 | CAN 69 | UK 46

#3193 Dusk Destructed Skinny 0-16
USA 119 | CAN 139 | UK 94
curvy fit #3194

#2073 Pyramid Charm Earrings
USA 49 | CAN 59 | UK 38

#2076 Chelsea Charm Necklace
USA 68 | CAN 88 | UK 52



A colorful cardigan adds fun contrast to destructed jeans.

#3179 Aspen Vest XS-XL
USA 149 | CAN 189 | UK 119

#3290 Waterfront Shirt XS-XL
USA 98 | CAN 128 | UK 76

#3195 Lace Skinny 0-16
USA 109 | CAN 139 | UK 84
curvy fit #3196

#2070 Rock Star Earrings
USA 49 | CAN 59 | UK 38

#2089 Zelda Cuff
USA 59 | CAN 69 | UK 46





Gucci loafers



Wear an ankle bootie with the Utility Skirt for an edgier look.

#3181 Tartan Jacket
#3266 Jagger Blouse
#3218 Utility Skirt



rag & bone booties



Layer a matching cami under the Taylor Tee, or try a pop of color!



This just in: loafers are the new ballet flat!

#3169 Darby Cardigan
#3274 Foulard Top
#3193 Dusk Destroyed Skinny curvy fit #3194



#3180 Harbor Jacket



#3245 Taylor Tee XXS-XL
USA 89 | CAN 109 | UK 69
#5067 V-Neck Cami (cement) XS-XL
USA 36 | CAN 46 | UK 28
also available in fiery
#3195 Lace Skinny curvy fit #3196
#2091 Cameo Earrings
#2092 Cameo Necklace

pacific blue



#2070 Rock Star Earrings

#3182 Quilted Jacket XS-XL
USA 139 | CAN 179 | UK 108
#3272 Cleo Top
#3189 New Crop
#2070 Rock Star Earrings



#3272 Cleo Top



#3160 Ballet Sweater
#3268 Poppy Top
#3220 Sigourney Skirt
#2074 Jasper Bangle
#2089 Zelda Cuff



A little unexpected color-blocking goes a long way toward elongating your frame!

osaka nights

#3176 Convertible Jacket XS-XL

USA 198 | CAN 249 | UK 154

#3255 Split-Back Blouse XS-XL

USA 99 | CAN 119 | UK 78

#3202 Top-Notch Trouser 0-16 (R/L)

USA 129 | CAN 159 | UK 99

#2090 Zelda Necklace

USA 68 | CAN 88 | UK 52



Let your jewelry take center stage by anchoring statement pieces against a simple, monochromatic look.



#3232 Utility Top XS-XL

USA 109 | CAN 139 | UK 84

#3218 Utility Skirt 0-16

USA 89 | CAN 109 | UK 69

#2090 Zelda Necklace

USA 68 | CAN 88 | UK 52

#2089 Zelda Cuff

USA 59 | CAN 69 | UK 46

#3173 Windowpane Jacket XXS-XL

USA 169 | CAN 209 | UK 129

#3265 Ruffle Tank XS-XL

USA 84 | CAN 104 | UK 66

#3299 Zebra Belt XS-XL

USA 59 | CAN 69 | UK 46

#3201 Ava Trouser (black) 0-16

USA 109 | CAN 129 | UK 84

also available in rhubarb

#2075 Jasper Crescent Necklace

USA 68 | CAN 88 | UK 52

#2074 Jasper Bangle (x2)

USA 49 | CAN 59 | UK 38



#3160 Ballet Sweater XS-XL

USA 99 | CAN 119 | UK 78

#3266 Jagger Blouse XS-XL

USA 99 | CAN 119 | UK 78

#3203 Windowpane Trouser 0-16

USA 119 | CAN 149 | UK 94

#2090 Zelda Necklace

USA 68 | CAN 88 | UK 52

#2089 Zelda Cuff

USA 59 | CAN 69 | UK 46



Love,
Carol
collection



Match the Utility Top
with the Ava Trouser for
an on-trend anti-suit. 💡



#3255
Split-Back Blouse

💡 This fall, we love
pairing cropped jackets
over longer tops.

#3176 Convertible Jacket
#3266 Jagger Blouse
#3195 Lace Skinny
curvy fit #3196
#2076 Chelsea Charm Necklace



#2074 Jasper Bangle



#2075 Jasper
Crescent Necklace

#3232 Utility Top
#3201 Ava Trouser (black)
#2089 Zelda Cuff (x2)



#3299 Zebra Belt

💡 Elevate destructed jeans
with a feminine top for a
wear-anywhere look.

#3159 Sweater Pea Coat
#3265 Ruffle Tank
#3299 Zebra Belt
#3193 Dusk Destructed Skinny
curvy fit #3194
#2075 Jasper Crescent Necklace
#2074 Jasper Bangle



#3174 Ava Jacket
#3242 Bowie Tee XS-XL
USA 76 | CAN 96 | UK 59
#3218 Utility Skirt
#2075 Jasper Crescent
Necklace

Our Convertible
Jacket adapts to
any season. Try
it short or long,
dressy or casual. 💡



#3176 Convertible Jacket

Love,
Carol
collection

osaka nights

Bamboo forest

Love,
Carol
collection



#3159 Sweater Pea Coat XXS-XL
USA 189 | CAN 239 | UK 149

#3264 Bloom Cami XS-XL
USA 76 | CAN 96 | UK 59

#3191 Slim Boyfriend 00-16
USA 109 | CAN 139 | UK 84

#2075 Jasper Crescent Necklace
USA 68 | CAN 88 | UK 52

#2074 Jasper Bangle (x2)
USA 49 | CAN 59 | UK 38



Relax and wear your jeans baggy, or for a slimmer silhouette, go down a size.

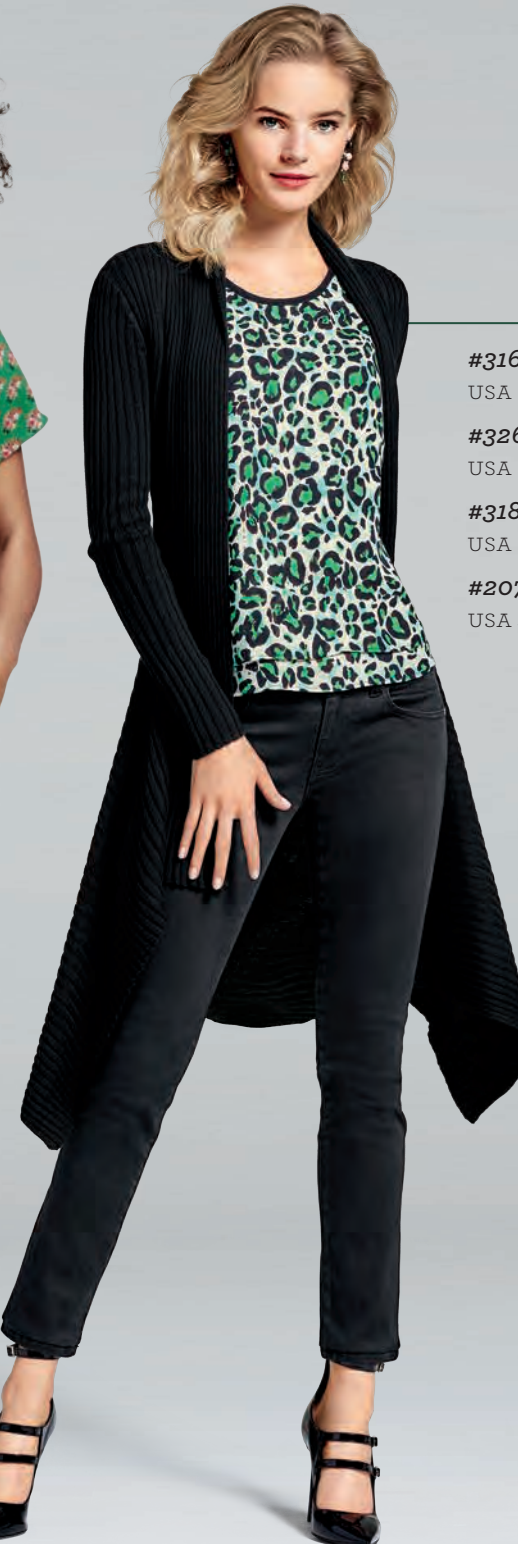
#3300 Duchess Scarf
USA 89 | CAN 109 | UK 69

#3252 Stevie Top XS-XL
USA 84 | CAN 104 | UK 66

#3197 Skinny Cord 0-16
USA 109 | CAN 139 | UK 84

#2075 Jasper Crescent Necklace
USA 68 | CAN 88 | UK 52

#2074 Jasper Bangle
USA 49 | CAN 59 | UK 38



#3164 Sweetheart Sweater XS-XL
USA 139 | CAN 179 | UK 108

#3260 Jungle Top XS-XL
USA 89 | CAN 109 | UK 69

#3189 New Crop 0-16
USA 109 | CAN 139 | UK 84

#2070 Rock Star Earrings
USA 49 | CAN 59 | UK 38



#3157 Lace-Up Sweater XS-XL
USA 139 | CAN 179 | UK 108

#3276 Zoe Top XS-XL
USA 79 | CAN 99 | UK 62

#3193 Dusk Destructed Skinny 0-16
USA 119 | CAN 139 | UK 94
curvy fit #3194

#2091 Cameo Earrings
USA 59 | CAN 69 | UK 46

#2090 Zelda Necklace
USA 68 | CAN 88 | UK 52





If you're looking for a fresh combination, try mixing florals with checks.

#3174 Ava Jacket
#3264 Bloom Cami
#3299 Zebra Belt
#3203 Windowpane Trouser



#3264 Bloom Cami

For extra glam, wear your bangles over your sleeves when rocking tops with thumbholes.



#2089
Zelda
Cuff



One belt, two ways! Wear the Here or There Belt slung low on your hips or at your true waist.



#3298 Here or There Belt

Layer a blazer over a ruffled floral tank for a fun fall fashion refresh!



bamboo forest



#2090 Zelda
Necklace

#3170 Penny Blazer
#3276 Zoe Top
#3197 Skinny Cord

#3276
Zoe Top





#2089 Zelda Cuff
USA 59 | CAN 69 | UK 46
pp. 05, 32, 14, 17, 18, 21, 23, 24, 25, 26, 30

#2072 Pyramid Necklace
USA 58 | CAN 68 | UK 44
pp. 04, 10, 11



#2076 Chelsea Charm Necklace
USA 68 | CAN 88 | UK 52
pp. 08, 09, 13, 14, 20, 21, 26



#2073 Pyramid Charm Earrings
USA 49 | CAN 59 | UK 38
pp. 04, 05, 09, 11, 13, 15, 16, 21
Wear these earrings as simple studs or decked out in charms.



#2091 Cameo Earrings
USA 59 | CAN 69 | UK 46
pp. 06, 32, 14, 17, 18, 19, 22, 29

#2092 Cameo Necklace
USA 98 | CAN 118 | UK 76
pp. 06, 07, 12, 16, 18, 22



#2070 Rock Star Earrings
USA 49 | CAN 59 | UK 38
pp. 05, 10, 18, 20, 21, 23, 29



#2090 Zelda Necklace
USA 68 | CAN 88 | UK 52
pp. 05, 14, 17, 18, 19, 24, 25, 29, 31



#2074 Jasper Bangle
USA 49 | CAN 59 | UK 38
pp. 23, 25, 26, 28



#2075 Jasper Crescent Necklace
USA 68 | CAN 88 | UK 52
pp. 25, 26, 32, 28



tops
TANKS,
TEES & TUNICS



#3081 Simple Cami (black) XS-XL
USA 36 | CAN 46 | UK 28
p. 08



#3081 Simple Cami (nude) XS-XL
USA 36 | CAN 46 | UK 28
pp. 16, 17, 19



#3081 Simple Cami (white) XS-XL
USA 36 | CAN 46 | UK 28



#5067 V-Neck Cami (cement) XS-XL
USA 36 | CAN 46 | UK 28
p. 22



#5067 V-Neck Cami (fiery) XS-XL
USA 36 | CAN 46 | UK 28
p. 05



#3278 Monaco Cami XS-XL
USA 96 | CAN 116 | UK 74
pp. 16, 18



#3264 Bloom Cami XS-XL
USA 76 | CAN 96 | UK 59
pp. 28, 30



#3243 Beyond Tee
XS-XL
USA 99
CAN 119
UK 78
pp. 08, 10



#3244 Cute Tee XS-XL
USA 74 | CAN 94 | UK 58
pp. 06, 07



#3271 Venus Top XS-XL
USA 79 | CAN 99 | UK 62
p. 04



#3242 Bowie Tee XS-XL
USA 76 | CAN 96 | UK 59
p. 27



#3268 Poppy Top XS-XL
USA 84 | CAN 104 | UK 66
pp. 20, 23



#3276 Zoe Top XS-XL
USA 79 | CAN 99 | UK 62
pp. 29, 31



#3240 Recess Tank XS-XL
USA 64 | CAN 84 | UK 49
p. 09



#3272 Cleo Top XS-XL
USA 84 | CAN 104 | UK 66
pp. 21, 23



#3258 Cameo Top XS-XL
USA 84 | CAN 104 | UK 66
pp. 05, 07



#3273 Underline Blouse XS-XL
USA 79 | CAN 99 | UK 62
pp. 16, 18



#3259 Wraparound Top O-16
USA 99 | CAN 119 | UK 78
p. 18



#3265 Ruffle Tank XS-XL
USA 84 | CAN 104 | UK 66
pp. 25, 26



#3266 Jagger Blouse XS-XL
USA 99 | CAN 119 | UK 78
pp. 22, 25, 26



#3275 Medallion Reign Blouse XS-XL
USA 89 | CAN 109 | UK 69
p. 12



heart of cabi
item

#3270 Heartbreaker Top XS-XL
USA 89 | CAN 109 | UK 69
pp. 06, 43



#3260 Jungle Top XS-XL
USA 89 | CAN 109 | UK 69
p. 29



#3274 Foulard Top XS-XL
USA 89 | CAN 109 | UK 69
pp. 20, 22



#3251 Flanders Top XS-XL
USA 79 | CAN 99 | UK 62
p. 04



#3252 Stevie Top XS-XL
USA 84 | CAN 104 | UK 66
p. 28



#3229 Relax Tee XXS-XL
USA 84 | CAN 104 | UK 66
pp. 09, 11



#3227 Quinn Tee XS-XL
USA 84 | CAN 104 | UK 66
p. 14



#3228 Ernest Tee XS-XL
USA 89 | CAN 109 | UK 69
pp. 13, 14



#3226 Sawyer Tee XS-XL
USA 86 | CAN 106 | UK 68
p. 30



#3245 Taylor Tee XXS-XL
USA 89 | CAN 109 | UK 69
p. 22

tops
TEES & BLOUSES



#3225 Odyssey Turtleneck XS-XL
USA 64 | CAN 84 | UK 49
p. 11



#3231 Recess Topper XS-XL
USA 99 | CAN 119 | UK 78
p. 09



#3232 Utility Top XS-XL
USA 109 | CAN 139 | UK 84
pp. 24, 26



#3290 Waterfront Shirt XS-XL
USA 98 | CAN 128 | UK 76
pp. 15, 21



#3250 Daisy Blouse XS-XL
USA 99 | CAN 119 | UK 78
p. 12



#3249 Paris Blouse XS-XL
USA 94 | CAN 114 | UK 72
p. 17



#3255 Split-Back Blouse XS-XL
USA 99 | CAN 119 | UK 78
pp. 24, 26



#3291 It's a Wrap Shirt XS-XL
USA 98 | CAN 128 | UK 76
pp. 17, 19

sweaters



#3158 Camo Pullover XS-XL
USA 109 | CAN 139 | UK 84
p. 05



#3157 Lace-Up Sweater XS-XL
USA 139 | CAN 179 | UK 108
p. 29



#3168 Cable Cowl XS-XL
USA 119 | CAN 149 | UK 94
p. 13



#3167 Fergie Turtleneck XXS-XL
USA 139 | CAN 179 | UK 108
p. 08



#3163 Reversible Wrap Sweater XS/S; M/L
USA 129 | CAN 159 | UK 99
pp. 12, 15



#3162 Rosewood Sweater XXS-XL
USA 149 | CAN 189 | UK 119
pp. 04, 11



#3160 Ballet Sweater XS-XL
USA 99 | CAN 119 | UK 78
pp. 18, 23, 25



#3169 Darby Cardigan XS-XL
USA 89 | CAN 109 | UK 69
pp. 21, 22



#3155 Cobblestone Cardigan XS-XL
USA 98 | CAN 128 | UK 76
pp. 04, 07



#3161 Shirttail Cardigan XS-XL
USA 119 | CAN 149 | UK 94
pp. 16, 18, 30

long sweaters



#3164 Sweetheart Sweater XS-XL
USA 139
CAN 179
UK 108
p. 29



#3166 Lara Sweater XXS-XL
USA 159
CAN 199
UK 124
p. 13

because you asked...
introducing
cabi Basics



#5062 Double-V Tee (light heather gray) XS-XL
USA 76 | CAN 96 | UK 59



#5062 Double-V Tee (heather black) XS-XL
USA 76 | CAN 96 | UK 59



#3185 Wrap Tee (black) XS-XL
USA 69 | CAN 89 | UK 54



#3185 Wrap Tee (white) XS-XL
USA 69 | CAN 89 | UK 54



#3052 Serenity Tee (heather taupe) XXS-XL
USA 79 | CAN 89 | UK 62



#3052 Serenity Tee (heather red) XXS-XL
USA 79 | CAN 89 | UK 62



#3052 Serenity Tee (heather black) XXS-XL
USA 79 | CAN 89 | UK 62

jackets & VESTS



#3182 Quilted Jacket XS-XL
USA 139 | CAN 179 | UK 108
p. 23



#3173 Windowpane Jacket XXS-XL
USA 169 | CAN 209 | UK 129
pp. 10, 25



#3170 Penny Blazer XS-XL
USA 149 | CAN 189 | UK 119
pp. 12, 14, 31



#3174 Ava Jacket XS-XL
USA 149 | CAN 189 | UK 119
pp. 06, 16, 19, 27, 30



#3181 Tartan Jacket 0-16
USA 169 | CAN 209 | UK 129
pp. 20, 22



Love,
Carol
collection

#3159 Sweater Pea Coat XXS-XL
USA 189 | CAN 239 | UK 149
pp. 10, 26, 28



#3175 Outing Blazer 0-16
USA 159 | CAN 199 | UK 124
p. 05



Love,
Carol
collection

#3184 Mesh-Back Jacket XXS-XL
USA 189 | CAN 239 | UK 149
p. 08



Love,
Carol
collection

#3176 Convertible Jacket XS-XL
USA 198
CAN 249
UK 154
pp. 24, 26, 27



#3180 Harbor Jacket XS-XL
USA 189
CAN 239
UK 149
pp. 06, 20, 23



Love,
Carol
collection

#3165 Napa Vest XXS-XL
USA 139
CAN 179
UK 108
pp. 09, 11, 15



#3178 Drafting Vest XS-XL
USA 149
CAN 189
UK 119
p. 17



#3179 Aspen Vest XS-XL
USA 149
CAN 189
UK 119
p. 21

bottoms PANTS & SKIRTS



#3202 Top-Notch Trouser 0-16 (R/L)
USA 129
CAN 159
UK 99
pp. 18, 24



#3203 Windowpane Trouser 0-16
USA 119
CAN 149
UK 94
pp. 06, 10, 25, 30



#3201 Ava Trouser (rhubarb) 0-16
USA 109
CAN 129
UK 84
p. 04



#3201 Ava Trouser (black) 0-16
USA 109
CAN 129
UK 84
pp. 25, 26



#3199 The Scout Cord 0-16
USA 119
CAN 149
UK 94
pp. 13, 15, 30



#3197 Skinny Cord 0-16
USA 109
CAN 139
UK 84
pp. 14, 19, 28, 31



#3211 Sleek Legging (black) XS-XL
USA 99
CAN 119
UK 78
pp. 09, 16



#3211 Sleek Legging (heather gray) XS-XL
USA 99
CAN 119
UK 78



#3212 Safari Legging XS-XL
USA 99
CAN 119
UK 78
pp. 08, 17



#3210 Spacedye M'Leggings XS-XL
USA 79
CAN 98
UK 62
p. 08



#3204 Trek Jogger XS-XL
USA 99
CAN 119
UK 78
p. 09



#3220 Sigourney Skirt 0-16
USA 89 | CAN 109 | UK 69
pp. 10, 20, 23



#3218 Utility Skirt 0-16
USA 89 | CAN 109 | UK 69
pp. 11, 16, 18, 22, 24, 27



#3219 Fiery Skirt 0-16
USA 89 | CAN 109 | UK 69
pp. 05, 07, 43

jeans



#3195 Lace Skinny 0-16
USA 109
CAN 139
UK 84
pp. 10, 14, 21, 22, 26



#3196 Lace Curvy Skinny 0-16
USA 109
CAN 139
UK 84



jeans

(cont.)

#3189 New Crop 0-16
USA 109
CAN 139
UK 84
pp. 04, 17, 18,
20, 23, 29



#3193 Dusk Destroyed Skinny 0-16
USA 119
CAN 139
UK 94
pp. 05, 12, 14, 21,
22, 26, 29



#3194 Dusk Destroyed Curvy Skinny 0-16
USA 119
CAN 139
UK 94



dress

#3191 Slim Boyfriend
00-16
USA 109
CAN 139
UK 84
pp. 06, 11, 12, 28



#3295 Provincial Dress
XXS-XL
USA 119
CAN 149
UK 94
pp. 13, 14



accessories

BELTS & SCARF



#3298 Here or There Belt XS-XL
USA 89 | CAN 109 | UK 69
pp. 05, 14, 30, 31



#3299 Zebra Belt XS-XL
USA 59 | CAN 69 | UK 46
pp. 04, 05, 06, 17, 21, 25, 26, 27, 30



#3300 Duchess Scarf
USA 89 | CAN 109 | UK 69
pp. 13, 14, 16, 28

take a 2nd look
for these icons



◀ To discover Carol Anderson-inspired pieces.



◀ To discover the latest Style & Ideas.

sizing
conversion

UK:

00	0	2	4	6	8	10	12	14	16
2	4	6	8	10	12	14	16	18	20



MIX
Paper from
responsible sources
FSC® C102835





the heart of cabi foundation



ENCOURAGING AND EMPOWERING WOMEN AROUND THE WORLD

We endeavor to do well as a business in order to do good in the world. The Heart of cabi Foundation is our primary avenue for taking the transformation that happens through the cabi Experience far beyond living rooms.

MISSION: To encourage and empower women in need. From distributing clothing to local communities affected by natural disasters to empowering women entrepreneurs around the developing world to work their way out of poverty, we are passionate about serving and investing in women across the globe...now more than ever.



our 3 impact avenues

♥ **BUILD YOUR BUSINESS & YOU EMPOWER ANOTHER WOMAN TO BUILD HERS:** For each new cabi Stylist who begins her business, cabi will fund a small business loan in her name for another woman entrepreneur in a developing country. Together, women experience the unique growth and freedom that comes from building a business of their own.

♥ **MAKE A CHANGE:** When placing a cabi order, round your order total up to the nearest dollar or pound. The change you give funds small business loans through Opportunity International and empowers women entrepreneurs working tirelessly to create better futures for their families and communities. A little change from you can create a big change for women in developing countries.

♥ A portion of the net proceeds from the sale of the **HEARTBREAKER TOP** will fund The Heart of cabi Foundation's efforts around the world.

together, we are affecting lives around the world

© 2016 cabi, LLC. Content and images all rights reserved.





You (yes, you!) could be a cabi Stylist!

What could be better than helping women discover their personal style while you enjoy determining your own paycheck?

Cabi is a company founded by women, for women, and we're revolutionizing the way women shop and work...one cabi Stylist at a time. Join us! Your cabi Stylist would love to share more about the ways her cabi career has enriched her life! Start dreaming about how you'll call your own shots at: cabionline.com/careers

Host & give your friends
the gift of style.



Everyone loves a wardrobe wake-up, and your cabi Stylist is eager to help you and your friends discover your personal style together!

HOSTESS BENEFITS

sales	\$250 £200	\$500 £400	\$750 £600	*\$1,000 £800	\$1,250 £1000	\$1,500 £1,200	\$1,750 £1,400	\$2,000 £1,600	\$2,250 £1,800
items at 50% off	1	2	3	5	6	7	8	9	10
cabi credit	N/A	\$15 £12		\$30 £24		\$45 £36		\$60 £48	

*Receive an additional 50% off item once you reach \$1,000/£800 in sales.

HAVE A FRIEND WHO WOULD LIKE TO HOST HER FIRST cabi FASHION EXPERIENCE?
Refer your friend and you can earn one 50% off item (and she'll get the discount on top of her other Hostess Benefits, too!).



Not just about the way you look, but how you feel. It's not simply the outfit, but the *style* you own. It's not only the compliment, but the *conversation*. Ultimately, beyond great fashion, cabi is about *the connection*.

From the moment cabi was created, it was more than a brand; it was a *vision* to bring inspiration, *confidence*, and a lasting sense of *community* to generations of women. Knowing our greatest days are ahead of us, our empowered network of *friends* has become a catalyst for the biggest evolution in women's *fashion*.

The true essence of cabi isn't just about the clothing, it's about the *relationships* we build—each encouraging us to discover our style and *inspiring* us to mix and match what we wear with the way we live.

Cabi SIMPLY IS...YOU. *Inspired.*



by invitation

Get fashionable updates at your fingertips any time! Connect with us:

